

Multilingual dictionary for Pocket PC “SlovoEd”

The manual modified on July 2, 2002

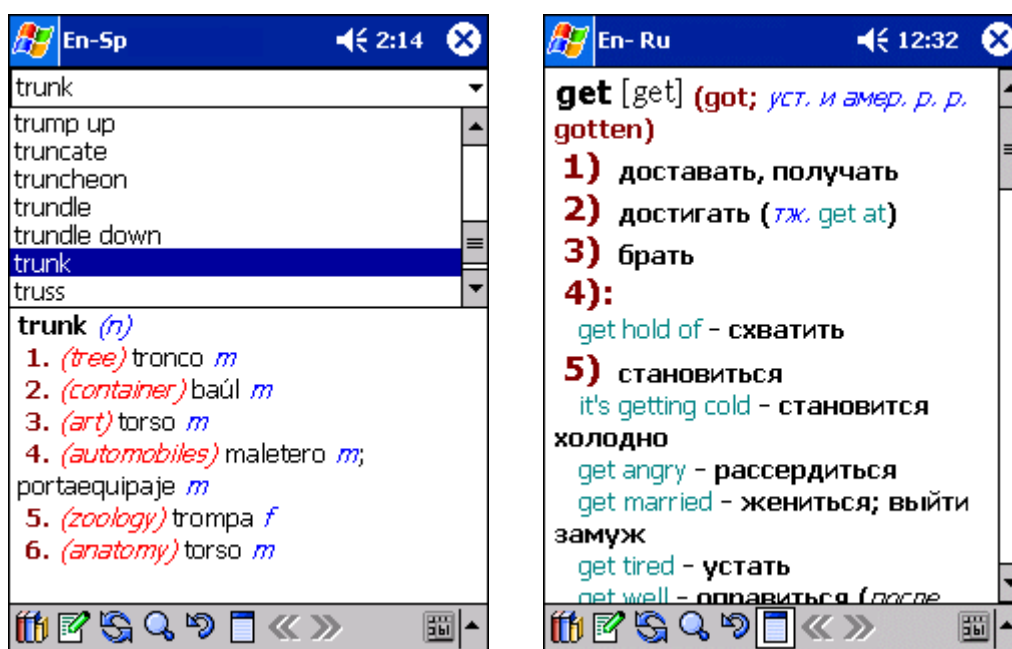
Table of contents:

General information.....	2
Installation	2
Installation of additional dictionary bases	3
How to use SlovoEd.....	4
Main elements of the SlovoEd interface.....	4
SlovoEd options.....	8
Operating modes.....	9
General mode.....	9
Search mode.....	9
Resident mode	9
How to add and edit word entries.....	11
Support and updates service	13
How to buy SlovoEd dictionaries for Pocket PC.....	13

General information

The program **SlovoEd** is a multilingual dictionary for Pocket PC/Pocket PC 2002/Windows CE 3.0 operating system. Advantages of the program are:

- Great number of word entries
- Low memory consumption. High data compression ratio for dictionaries with a high access rate is available due to special technology developed by **Paragon Software (SHDD)**.
- The possibility to install several language pairs
- Convenient user interface
- Color formatting of word entries



- Search history (last words that you searched), you can see any word from the history again at any time
- The possibility to create and edit user dictionary data base
- Transcription support
- Full screen mode to show translation
- The possibility to search words using special patterns
- The possibility to install **SlovoEd** to expansion cards
- The program has the resident module that allows to get translation of any word without exiting a current application.

Information about all dictionaries that we develop is available at www.penreader.com/PocketPC/SlovoEd.html.

SlovoEd supports correct sorting order for each national language according to its alphabet. For example some languages (Czech, Slovak, Hungarian and so on) have special characters and combinations of letters like **ä, ä, ç, č, h, ch, l, l'**, which are considered as one letter. Despite of this fact dictionary entries are listed in the correct order.

Demo-version limitations:

The more you use an unregistered dictionary, the more you see a message about its registration procedure.

To register SlovoEd, open the **Dictionary** menu, choose the **Register** item and enter the serial number.

Installation

SlovoEd installation is executed from desktop PC. Be sure that Microsoft ActiveSync is installed on your desktop PC. You need ActiveSync to connect your Pocket PC device with desktop PC. Usually it is delivered on a CD in PDA package¹. You can read about ActiveSync installation in the documentation to this program.

¹ You can find the newest Microsoft ActiveSync version at web-site <http://www.pocketpc.com>

Attention!

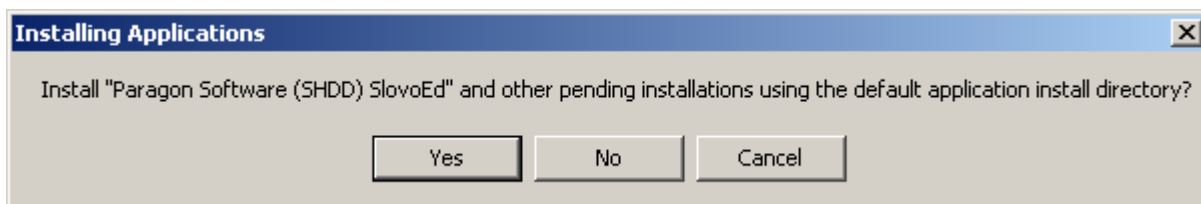
- **Don't forget** to perform back up operation before installation of any program (including **SlovoEd**) to avoid accidental data loss!
- If you used an earlier version of SlovoEd, you should uninstall it first.

Installation process.

1. Connect your PDA with desktop PC by cable. Start the ActiveSync program that provides partnership between PDA and desktop PC. When devices are connected an icon of connection on desktop PC tray bar becomes rich green.



2. On desktop PC start **SlovoEd** installation file by double click on it. Installation process will start automatically on your desktop PC.
3. Follow instructions of the installation program. While the installation process you can choose where **SlovoEd** should be installed (to a memory card or to the main memory of your device). To install **SlovoEd** to the memory card you should answer No in the following dialog.



Then you will see the window where you can choose location for **SlovoEd** to be installed.



4. Wait until a message telling you to restart your device appears on the screen of your device. Then tap OK.
5. When your device is restarted, you will find the SlovoEd icon in the **Programs** folder.



Installation of additional dictionary bases

You can install several different dictionary databases for the **SlovoEd** program. To do this you should run all installation files of the dictionaries you want to install one after another. To install each dictionary you should repeat the steps 1-4 of the installation procedure. You can choose dictionary location (memory card or main memory) for each dictionary.

Attention! The **SlovoEd** program may have English interface or national interface (Russian, German, Portuguese and so on). If you have installed several dictionary databases, the interface will be appropriate to the dictionary that was installed as the last one.

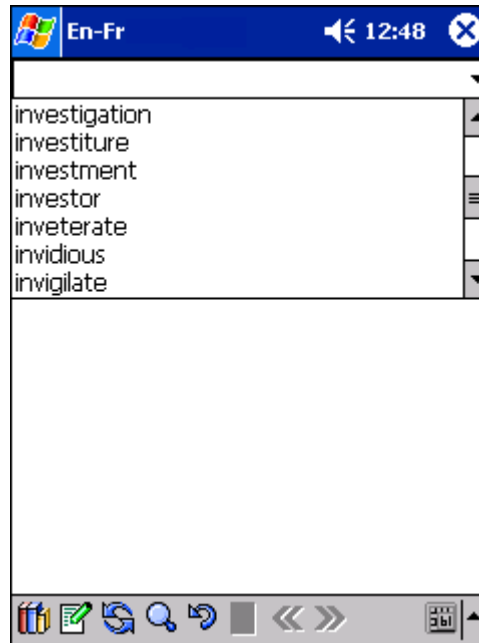
Thus you will be able to use several dictionaries simultaneously (for example, English-German and German-French) and switch them using the **Dictionary > Change dictionary** menu. In the **Change dictionary** menu you will see all the installed dictionaries in spite of where they are installed.

How to use SlovoEd

Main elements of the SlovoEd interface

Attention! SlovoEd will show the list of dictionary words and translations correctly in spite of what dictionary you have installed. But in some dictionaries you need a localization system to type words for search. We recommend you to use our localization system **LEng** or the program **InterKey**. **InterKey** provides many national onscreen layouts and allows you to switch quickly and easily between different national layouts.

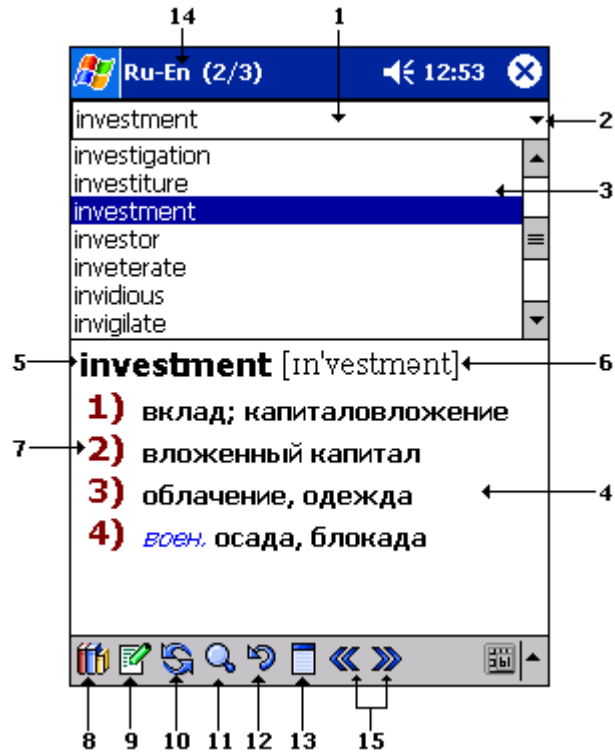
After starting the program the screen of your device will appear as follows:



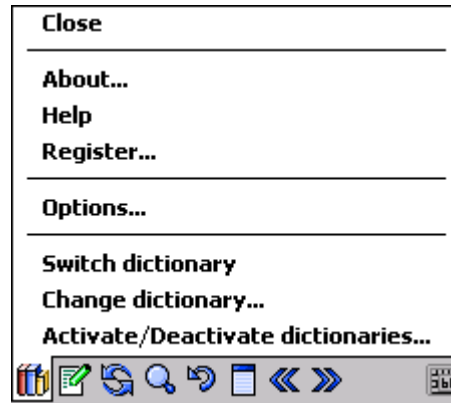
There is an edit field for entering words to be translated at the top of the screen. You can enter words in this field in different ways: using on-screen keyboard, using handwriting recognition system or by performing the «Paste» operation if you have previously copied a word to the Clipboard.

If a word is entered in the field and it exists in the dictionary, its translation will be displayed in the translation field. You can look through the dictionary by clicking the arrows on the screen or by using hardware buttons on the case of your device.

The elements of the program interface are shown in the picture below:



1. Edit field. You enter here a word you are interested in.
2. History list. If you press the arrow, you will see the list of the words that you searched before.
3. Words available in the dictionary.
4. Translation field.
5. Found result.
6. Transcription.
7. Translations of the found word. Each translation is enumerated. Each translation may have additional information like gender, part of speech, plural or singular form and so on.
8. The **Dictionary** menu:



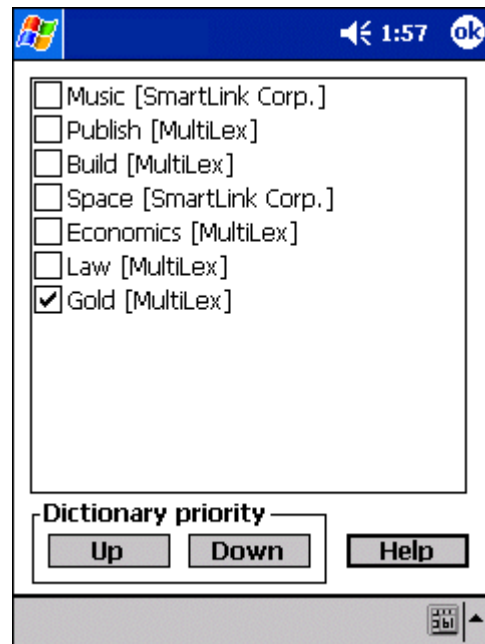
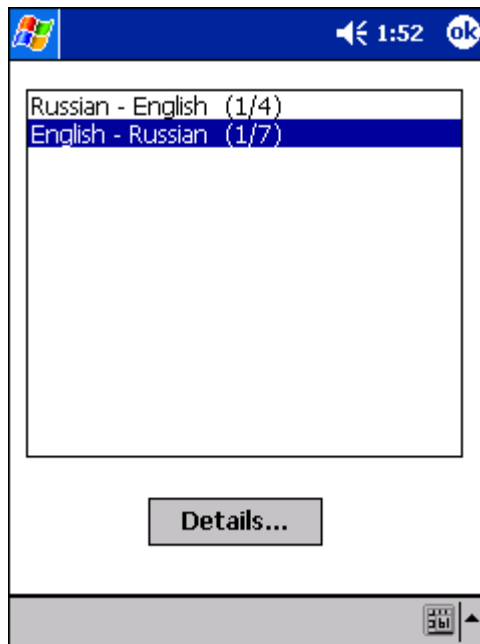
Menu items do the following.

The **Close** menu item closes the program.

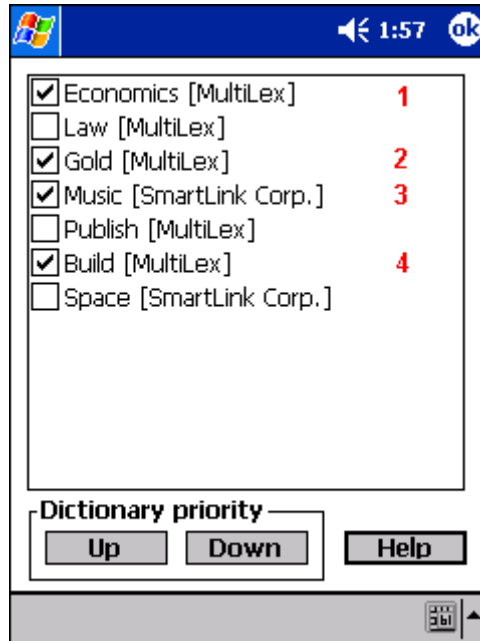
The **About** menu item informs you about the version of the program and the dictionary bases that are currently available.



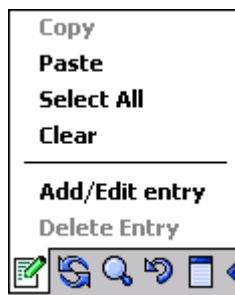
The **Help** menu item gives you information about how to work in the current operating mode. In the menu **Register** you can register your dictionary (or some dictionaries one after another). The **Options** item allows tuning **SlovoEd** for more convenient usage. Read about each option in the **SlovoEd options** section. The **Switch Dictionary** menu item allows switching between two active dictionaries. For example, if Russian-German dictionary is active, German-Russian dictionary will be active after choosing this item. In the menu **Change dictionary** you can choose any dictionary direction as an active one.



Having tapped the **Details** button you can see what dictionaries exactly are installed for the dictionary direction. The menu **Activate/Deactivate dictionaries** allows to choose several dictionaries that will be active and set priorities for active dictionaries. Priorities are important if you have installed several dictionaries of the same dictionary direction (for instance, several Russian-English dictionaries of different professional terms). Several dictionaries of the same direction are poured together to one dictionary. You need priorities to set in which order you will read translations of the same word from different dictionaries of professional terms. An example of dictionaries priorities is shown with red digits in the picture below:



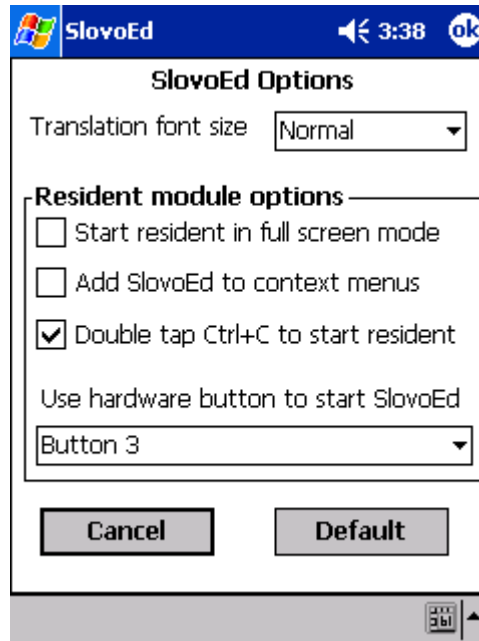
9. The **Edit** menu item allows you to perform Copy, Paste, Select, Select All and Clear operations with text in the edit field.
 Using the **Add/Edit entry** and the **Delete items** you can create your own user dictionary and then edit it: add new entries, edit and delete existing entries. Please read about how to add and edit entries in the section **How to add and edit word entries**.



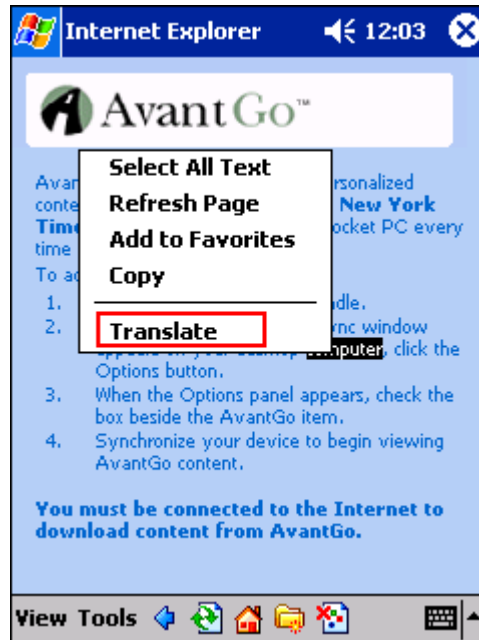
10. The **Switch dictionary** button enables quick switching between two dictionaries in the active pair.
 11. The button for switching to the **Search** mode. Press this button again to exit the **Search** mode.
 12. The **Back** button.
 13. The **Full Screen Mode** button. Press this button again to exit the **Full screen mode**.
 14. Title of the current dictionary.
 15. The **Forward/Back** buttons to show translations of the same word in other available dictionaries. These buttons are available only if several dictionaries of the same language pair are installed to your device (for example, several Russian-English dictionaries of professional terms).

SlovoEd options

You can tune SlovoEd for more convenient using. There are several options:



- Font size used to show translation in the translation field.
- Start the resident module in the full screen mode.
- The possibility to get translation of the word by opening the resident module through context menu. To open context menu you should select and tap&hold a word you want to translate.



- The possibility to open the resident module by double tapping Ctrl+C (if any word is selected).
- The possibility to open the resident module by pressing a hardware button.

Operating modes

General mode

In the general mode you can search a word by typing it in the edit field or by scrolling list of the dictionary words. You can choose any word from the list by tap on it or by pressing the hardware button.

You can select any word in the appeared translation by tap on it. To see translation of the selected word you should tap on it again. The dictionary will begin searching immediately. If the dictionary contains required word you will see the appropriate translation.

Search mode

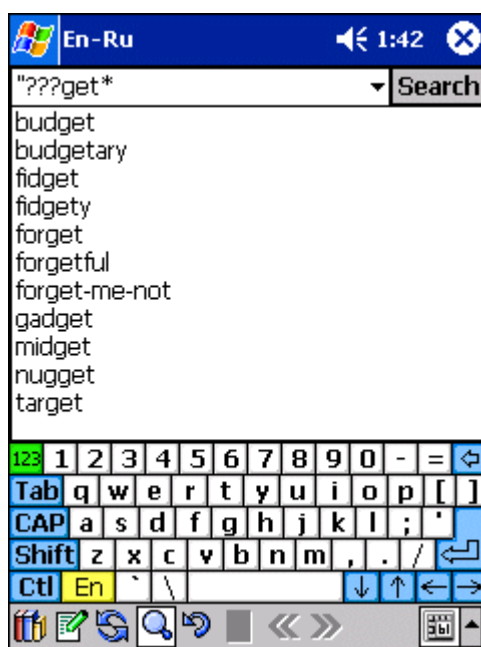
The program in the Search mode is shown in the picture below. You should enter a word and click on the Search button. You can also use the following patterns:

* – replaces some arbitrary characters;

? – replaces an arbitrary character;

"..." - exact request. If you input a word in quotes, **SlovoEd** will search a word that completely coincides with your request. If you input quote mark only at the beginning/end of the word, **SlovoEd** will search a word the beginning/end of which completely coincides with your request.

If you tap the **Search** button, you will see the list of entries containing your request.

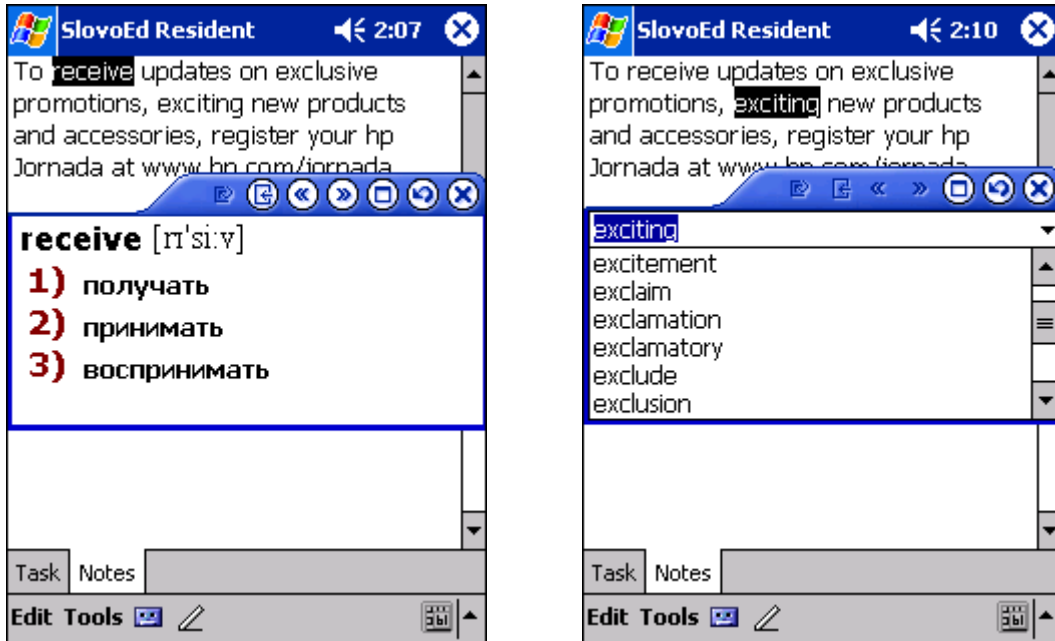


To see the translation of a word from the found list you should tap on it.

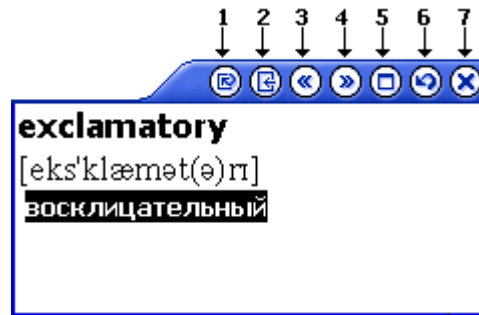
Using patterns in **SlovoEd** you can make up and solve crosswords.

Resident mode

SlovoEd has the resident module. It means that you can get translation of a word without exiting current application. To get translation of any word, you should only select it and start the resident module in the way that you have chosen in the SlovoEd options. The resident window will appear on the screen. If a word you want to translate is not contained in the dictionary, you will see a list of words neighboring to the word to be searched; if the word is contained in the dictionary, you will see its translation.



There are several buttons in the menu bar of the resident module:

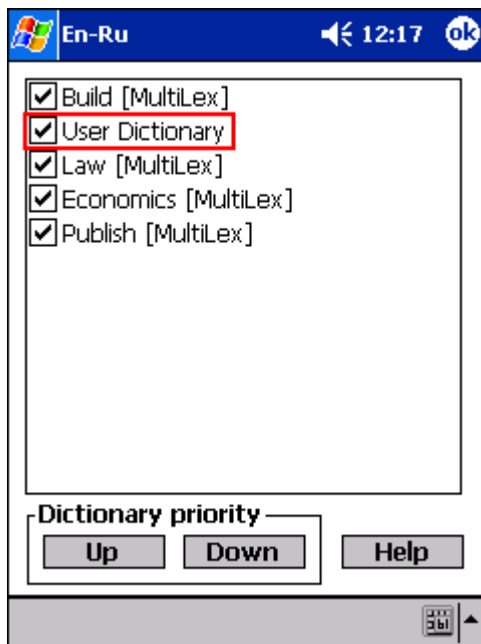


1. Insert selected word from translation into text. A word that you have selected in the translation in the resident module will be inserted in that place in the document where the cursor was before.
2. Back to the list of dictionary words.
3. Show translation of the same word in the previous dictionary. This button and the button 4 are enabled only if you have installed several dictionaries of the same language pair (for instance, Russian-English Fishing, Russian-English Space, Russian-English Music and so on). You may set in what order active dictionaries will be shown. To set the order you should open Dictionary/Activate/Deactivate dictionaries > Details in the main window of **SlovoEd**.
4. Show translation of the same word in the next dictionary.
5. Go to the full screen mode.
6. Back. If you press this button, you will see translation of the previous word.
7. Close the resident module.

You may tune the resident module for more convenient using in options in the main window of **SlovoEd**.

How to add and edit word entries

SlovoEd gives you the possibility to create your own dictionary database. It means that when you add new entries, new user dictionary base is composed of new words.

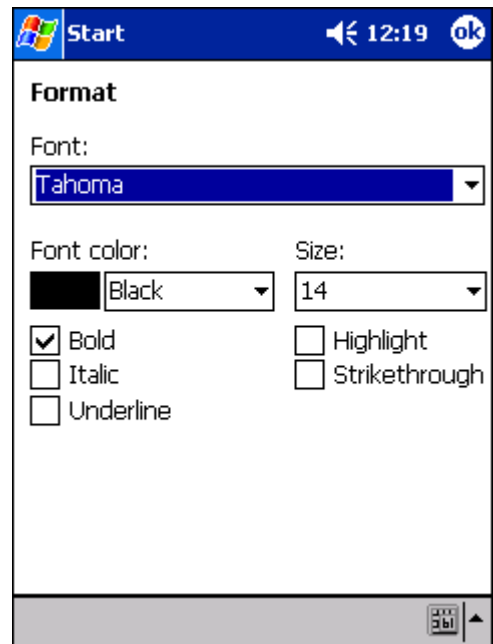


Then you can edit or delete any of entries that you added before.

Thus to add new entry you should open the **Edit** menu and choose the **Add/Edit entry** item. Then you should type new word and tap **OK**.



Then in the appeared window in the translation field you should type text and format it as you want. Tap the **Format** button to change style of text (font size, font face, color).



Having added some new entries you can edit or delete any of them. To edit an entry that you entered before you should select it in the list of dictionary words and tap **Add/Edit entry** in the **Edit** menu. Then change translation of the word or do something else.
 To delete a word entry from the user dictionary you should select the word and tap **Delete** in the **Edit** menu.

Support and updates service

If you have any questions concerning the **SlovoEd** dictionaries and the **LEng** localization programs or other Pocket PC software (**InterKey**, **InterPen** and so on) contact technical support service of Paragon Software (SHDD):

Tel: +7 095 408-61-79, +7 095 408-76-77

(Operation time of technical support line is 11.00 - 19.00 Moscow time)*

Web: <http://www.penreader.com>

911@penreader.com

In North America (USA, Canada, Mexico) the SlovoEd program is distributed and supported by Smart Link Corporation, an official representative office of Paragon Software (SHDD):

Smart Link Corporation

18401 Von Karman Ave.,

Ste. 450, Irvine, CA 92612, USA

Free hot line: (800) 256 4814

FAX: (949) 552 1699

Email: info@smartlinkcorp.com

How to buy SlovoEd dictionaries for Pocket PC

To register your copy of **SlovoEd** dictionaries you should buy registration number. You can find detailed information about buying procedure on our web site:

http://www.penreader.com/PocketPC/SlovoEd/articles/Shopping_area_for_SlovoEd.html

Please contact us if you have any problem with placing your on-line order:

911@penreader.com

If you are located in North America (USA, Canada, Mexico) you can buy the SlovoEd program via Smart Link Corporation, an official representative office of Paragon Software (SHDD). Please, call us: (800) 256 4814 or send your request by E-mail: info@smartlinkcorp.com or by fax: (949) 552 1699

Dear customers!

We will be glad to get your suggestions and comments that will help us to increase our programs quality.

Thanks you for your comments and suggestions!

* **When calling from outside Russia, please consider time shifts:** Moscow is 11 hours ahead of San-Jose, 8 hours ahead of New York, 3 hours ahead of London, 2 hours ahead of Munich and Paris, 6 hours behind Tokyo. Moscow office operation hours are from 11.00 till 19.00 by Moscow local time.



© Paragon Software (Smart Handheld Devices Division), Dolgoprudny, Moscow Region,

Russia

2.07.2002