



Copyright © 2003 Paragon Software (Smart Handheld Devices Division)
Dolgoprudny, Moscow region, Russia

Multi-language dictionary «MultiLex» for Sony Ericsson P800

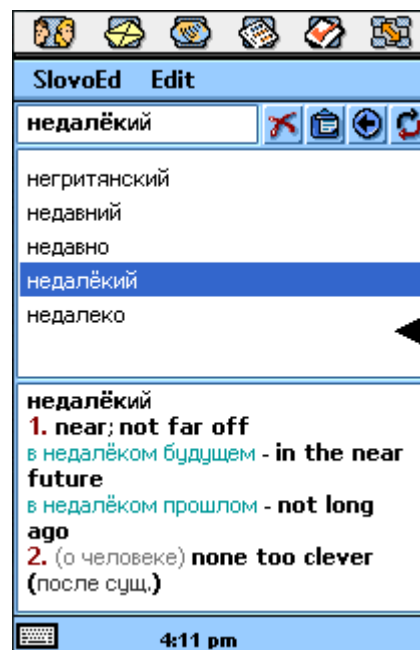
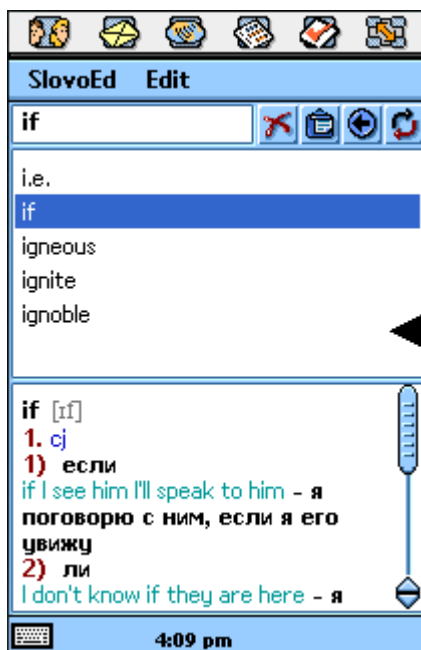
Table of contents:

About the program	2
Registration and demo version limitations	3
Installation	3
How to use «MultiLex»	5
Interface elements	6
Menu	7
How to learn new words using «MultiLex»	9
Uninstallation	10
Customer support service	10
How to buy «MultiLex»	10

About the program

«MultiLex» is a multi-language dictionary for Sony Ericsson P800. The advantages of the program are:

- Great number of word entries
- Low memory consumption
- The possibility to install several language pairs
- Convenient color interface



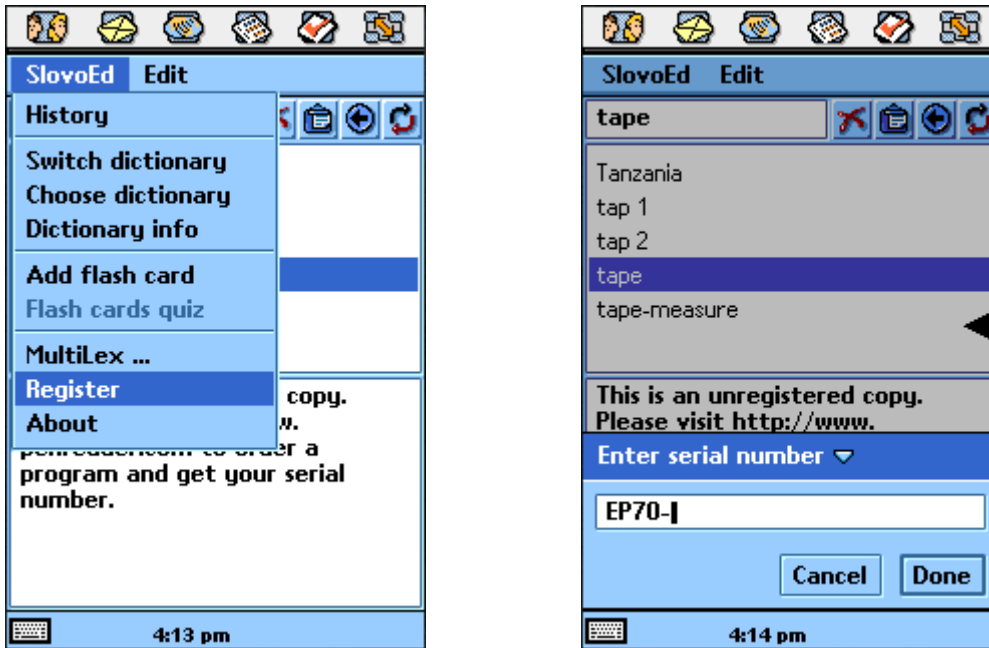
- Color formatting of word entries
- Search history (last words that you searched). You can see any word from the history again at any time
- Transcription support (only in «MultiLex» dictionaries)
- Full screen mode to show translation
- The possibility to install «MultiLex» on memory cards
- The possibility to save certain words on Flash Cards (a special method of learning new foreign words) and then pass through Flash Cards Quiz.

Information about all the dictionaries that we develop is available at <http://se-p800-software.epocware.com/MultiLex.html>.

High data compression ratio for dictionaries with a high access rate is available due to a special technology developed by Paragon Software (SHDD) (<http://www.penreader.com>).

Registration and demo version limitations

The more you use an unregistered dictionary, the more you see a message about its registration procedure. To register your copy of the dictionary, enter your serial number in the following dialog box:



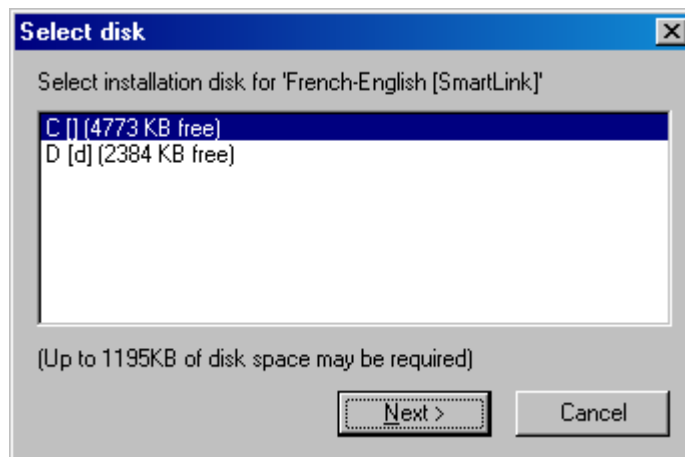
Each installed dictionary should be registered with its own serial number. The serial number you will get after buying the dictionary you want to use.

Installation

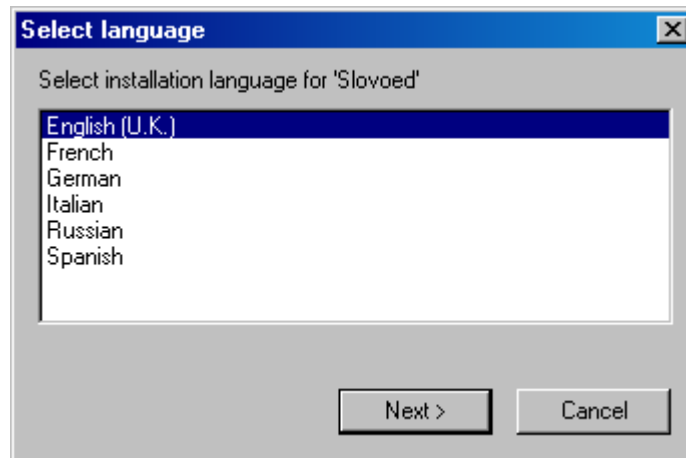
You can install «MultiLex» from your desktop computer on your mobile device or straight on your mobile device from the beginning to the end.

To install «MultiLex» from your desktop computer via Infrared port you should do the following:

1. Connect your Sony Ericsson P800 with the desktop computer using the program PC Suite.
2. Start the dictionary installation file on your desktop computer.
3. Follow the instructions of the installation wizard.
4. In the window shown in the picture below you should choose where the dictionary should be installed: in the main memory of your device (disk C) or on memory card (card D).



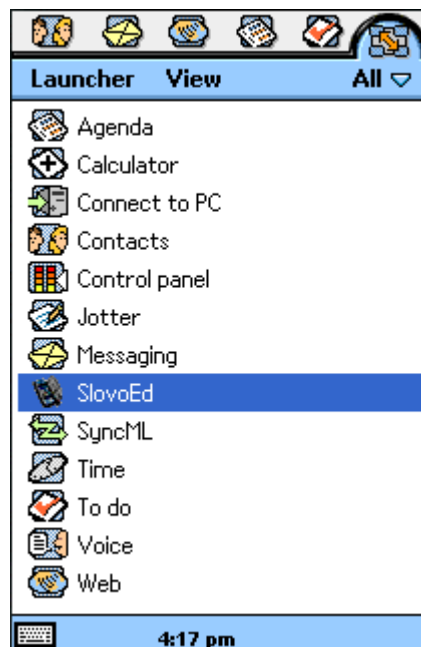
5. In the window shown in the picture below you should choose a language of the dictionary interface. It means that you should choose a language in which menu items of the dictionary and other interface elements will be shown to you on your Sony Ericsson P800.



To perform installation straight on your device you should do the following:

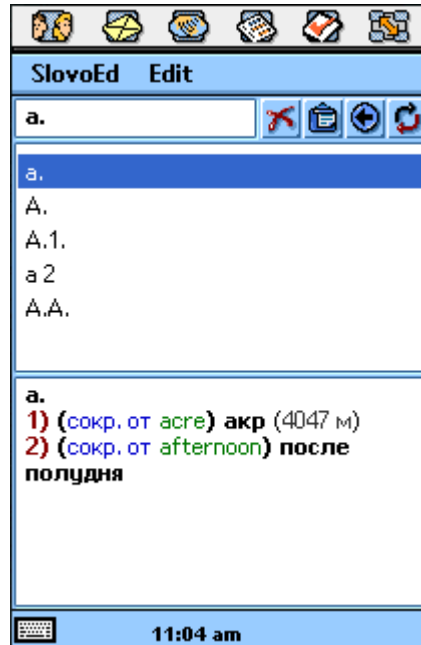
1. Deliver the dictionary installation file on your mobile device anyhow (for example, as a file attached to an e-mail message).
2. On the screen with the icons of the installed applications, you should choose the menu item **Launcher > Install**. Then select «MultiLex» and tap the **Install** button.
3. Follow the instructions of the installation wizard.

After the installation process, the icon of the dictionary «MultiLex» will appear in the list of all installed applications.




How to use «MultiLex»

After starting the «MultiLex» program, the screen your device will look like in the picture below:



There is an edit field for entering words to be translated at the top of the screen. You can enter words in this field in different ways:

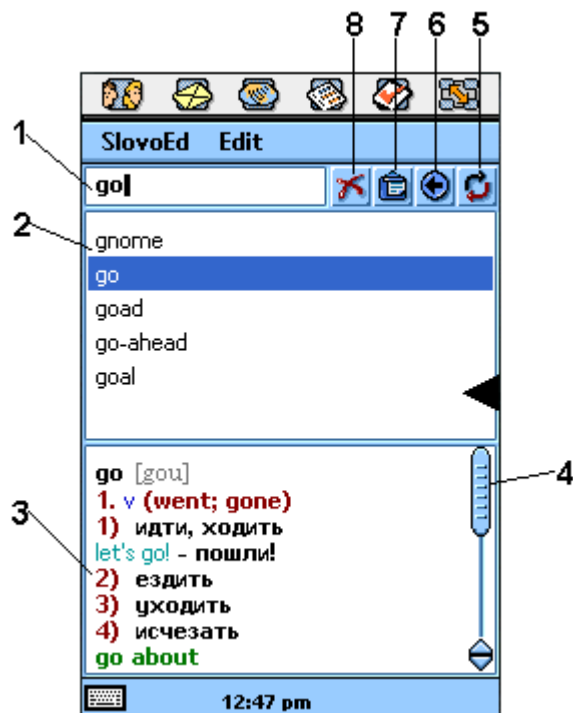
- Using handwriting recognizer.
- Using on-screen keyboard.
- Using the Copy-Paste operation. Paste your text by using the Paste item from the Edit menu or by tapping the button  at the top of the screen.

ATTENTION: Only a piece of text copied into the clipboard in the format Plain text can be pasted in the dictionary. It means that you may copy text not from any application to paste it later on in the dictionary and look up its translation. For example, you may copy text from the application Jotter but you may not copy text from the application Agenda.

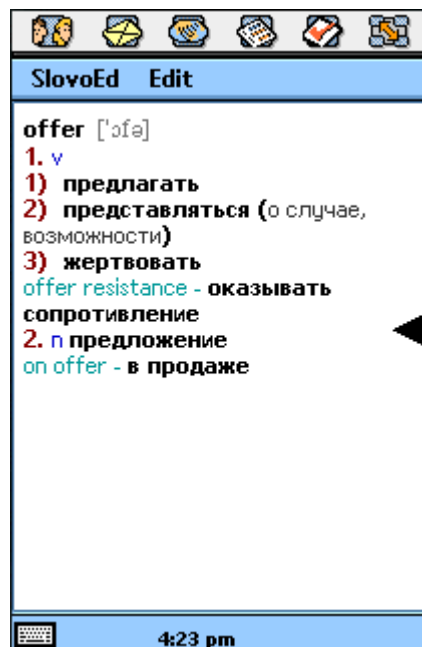
If a word entered in the field exists in the dictionary, its translation will be displayed under the edit field.

Interface elements

The elements of the program interface are shown in the picture below.



1. The Edit field.
2. The List of the dictionary words.
3. The translation of the word (the word entry). You can unwrap the word translation on the full screen using the menu item **Edit > Full screen**.



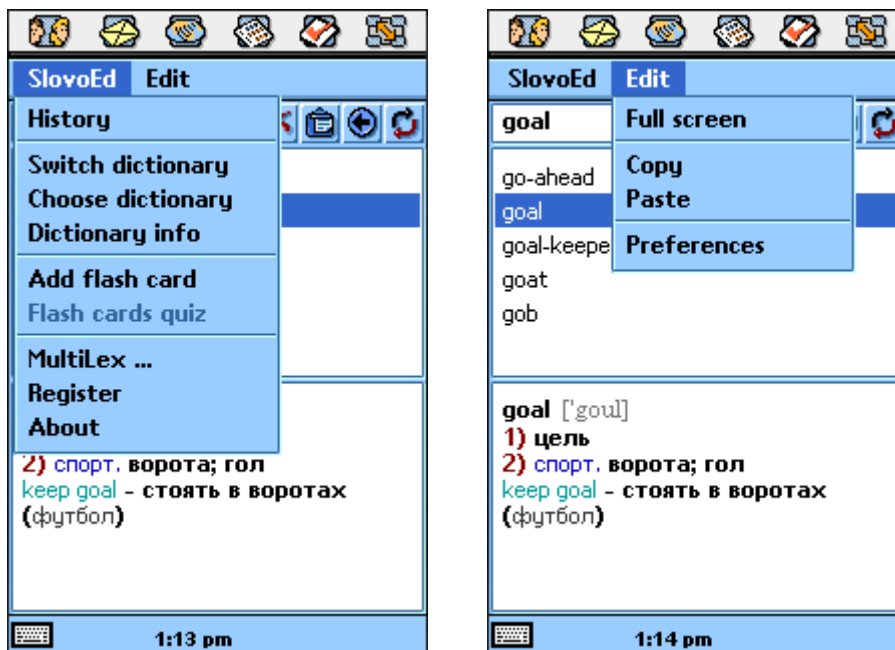
The word entry text is formatted with colors, which usually mean the following: part of speech is **blue**, word-combinations and phrases are **green**, translation of the word is black, additional information (transcription or description) is **gray**.

4. The scrollbar. You can scroll long translation when the content doesn't fit the screen.

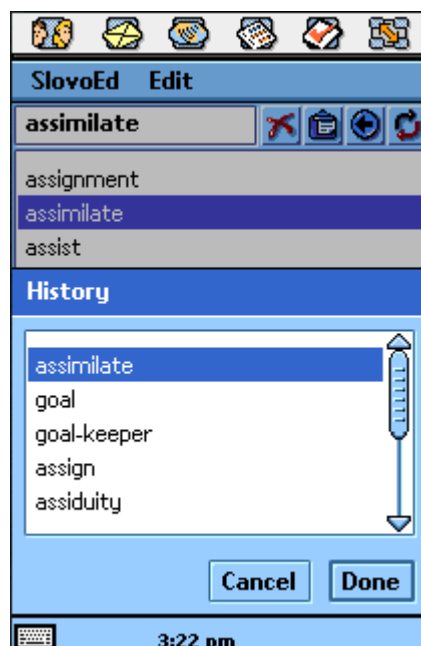
5. The button «switch dictionary». It switches a current dictionary to the paired one.
You can also switch the dictionary in one of the following ways:
 - Using the menu item **SlovoEd > Switch dictionary**
 - By typing in the language of the paired dictionary
 - By double tap on a word in the translation field (almost each word in the translation field is a link to another word entry).
6. The «Back» button. It shows previous word entry.
7. The «Paste» button. It inserts Clipboard contents into the edit field.
8. The «Clear» button. It clears the edit field.


Menu

The «MultiLex» menu includes two sections.

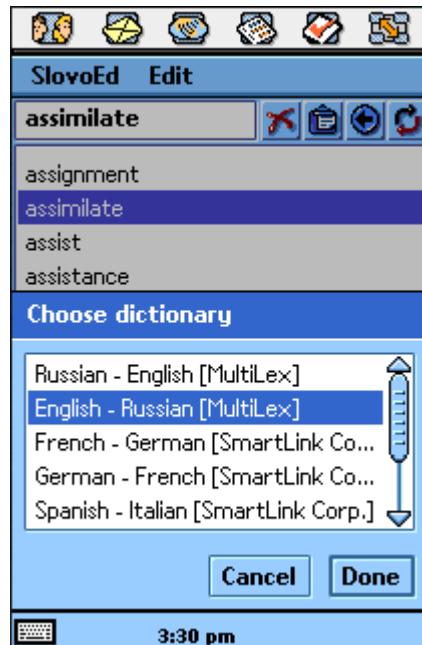


If you tap the menu item **SlovoEd > History**, you will the list of 15 latest words that you searched for.



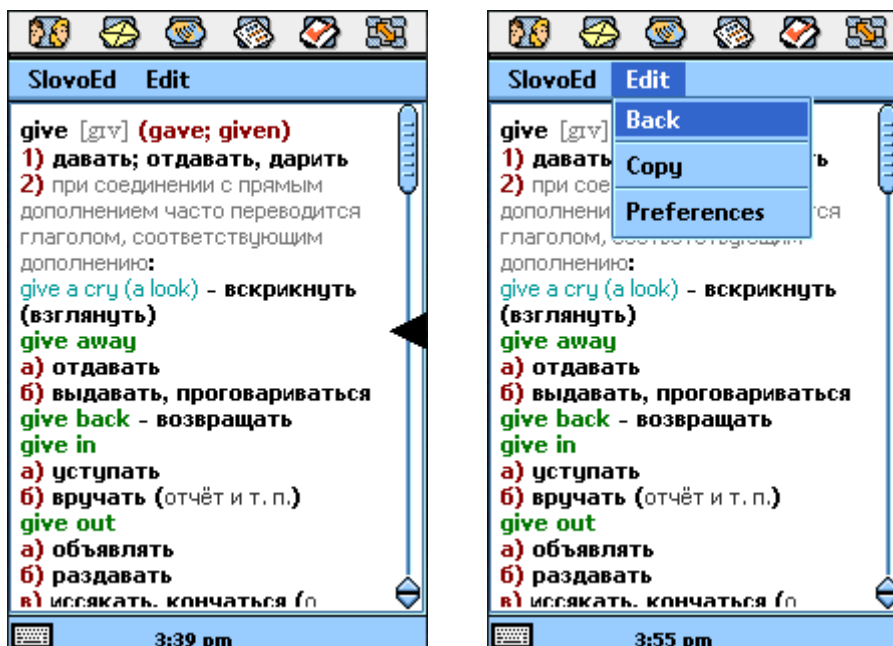
If you tap the menu item **SlovoEd > Switch dictionary**, a current dictionary will be switched to the paired one. The same thing will happen if you tap the button .

If you tap the menu item **SlovoEd > Choose dictionary**, you will see the list of all installed dictionaries. If you want to open one of them, which is not currently active, just select this dictionary in the list and tap the **Done** button.



If you tap the menu item **SlovoEd > About**, you will see the information about the current version of the dictionary, web site and e-mail address to contact with the developer of the dictionary.

If you tap the menu item **Edit > Full screen**, you will see the translation of the word in the full screen mode. To exit the full screen mode you should tap the menu item **Edit > Back**.



The menu items **Edit > Copy** and **Edit > Paste** allow you to copy selected text into the clipboard and then paste it into the edit field of the dictionary.

Using the menu item **Edit > Preferences** you can change the font size used in the dictionary.

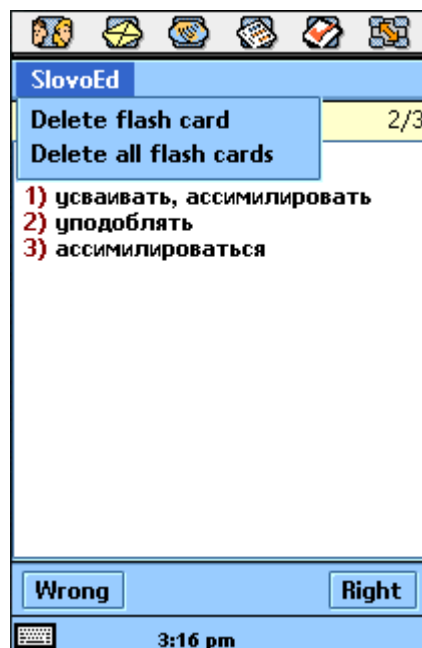
How to learn new words using «MultiLex»

«MultiLex» has a special feature, which gives you a convenient and quick way of learning new words. This feature allows you to add new words to flash cards and pass a quiz on them. If you are looking at the translation of the word and you want to learn it, just do the following: open the menu and choose the menu item **Add flash card**. Add other words you want to learn to flash cards in the same way.

If you have already added several new words to flash cards, you can try to pass a quiz on these new words. To start the quiz you should choose the menu item **Flash cards quiz**. The quiz will go on in the following way: one of the words added to flash cards will be shown to you. You should recall the translation of the word. Then you should check if you gave the correct translation (just tap at the center of the screen). You will see the correct translation of the word. Besides, there will be two buttons in the appeared window: **Right** and **Wrong**. Tap one of these buttons so that the program could save the result.

When you have finished answering all test questions, you will see statistics: the number of the right answers, the number of the wrong answers, and the number of the skipped questions.

Later on start the test again. On the basis of statistics the program will decide what words you have learned. The more you give the right translation of the certain word, the less you will be asked to translate this word. You can delete a flash card, which has bothered you, using the menu item **Delete flash card**.



Uninstallation

To completely uninstall the dictionary from your device you should do the following:

1. Move on to the list of the installed applications.
2. Tap the menu item **Launcher > Uninstall**.
3. In the appeared window select «MultiLex» and tap the **Uninstall** button.

Customer support service

If you have any questions about the dictionaries «SlovoEd» and «MultiLex», contact with the customer support service of Paragon Software (SHDD): se_support@penreader.com

Tel: (095) 408-61-79, 408-76-77 (phone support lines work from 11.30 a.m. till 7.00 p.m. of Moscow time) *

Web: http://www.penreader.com/SE_P800/MultiLex.html

How to buy «MultiLex»

To register your dictionary you should enter the serial number. You will get the serial number after buying the dictionary. You can find the detailed information about buying procedure on our web site:

<http://se-p800-software.epocware.com/MultiLex.html>

Please contact us if you have any problem with placing your on-line order: se_support@penreader.com

Dear customers!

Your reports and comments are much appreciated.

They help us to improve our programs quality.

Thank you in advance for your reports!

* **When calling from outside Russia, please consider time shifts:** Moscow is 11 hours ahead of San-Jose, 8 hours ahead of New York, 3 hours ahead of London, 2 hours ahead of Munich and Paris, 6 hours behind Tokyo. Moscow office operation hours are from 11.30 till 19.00 by Moscow local time.



© Paragon Software (Smart Handheld Devices Division)
Dolgoprudny, Moscow region, Russia