

National Language Support System For Palm OS – PiLoc (Version 2.19)

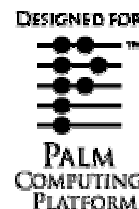
The manual modified on September, 13, 2001



In 1999 National Language Support System PiLoc has been awarded by a logo of Palm Computing Corporation "Designed for Palm Computing platform". This logo means that PiLoc meets all requirements for Palm OS software.

June 15, 2000 PiLoc tested by *PC Magazine/Russian Edition* (<http://www.pcmag.ru/>). The program has been awarded by *PC Magazine/RE Editor's choice* logo. It means that our National Language Support System is recognized as the best program on the market and recommended to all Palm device users.

Many official distributors of Palm OS organizers all over the world choose PiLoc for preinstallation on devices they sell.



About PiLoc

PiLoc is the system that provides national language localization of Palm Connected Organizers, Hanspring Visor, HandEra, IBM WorkPad, and Sony CLIE with operating system Palm OS (version 3.0 – 4.0) despite on language version of Palm OS (English, French, German and so on).

Current version of PiLoc provides the following opportunities:

- Adds national characters in the built-in system fonts:

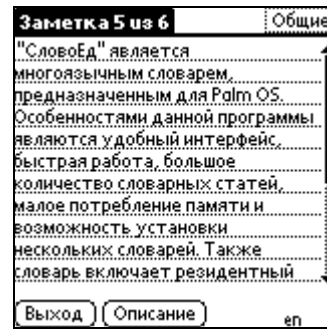
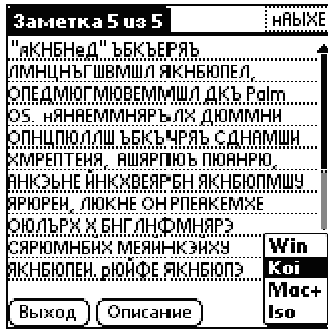


- Provides optional feature of full translation of Palm OS interface (all menus, icons, buttons, dialogs are translated into national language)

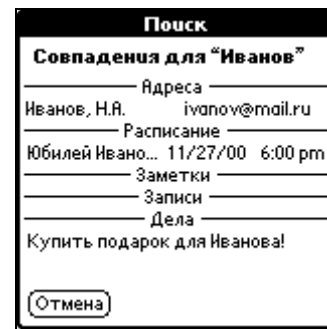


- For some languages supports basic national encoding types
- Provides convenient way of switching between national language and original (Default) interfaces in the case you install full modification of PiLoc
- Allows optional translation of categories of all built-in applications

- If different national encoding types are available PiLoc allows to switch encoding types on-line without exiting a current application and starting PiLoc options dialog:



- Encodes clipboard content while you change national encoding type by special Graffiti symbol. It works like symbol convertor and you get it free!
- Provides correct search and sorting operations for texts that are written in national language:



- Change Graffiti layout to enable to write national characters. Changes built-in Graffiti help according to the additional symbols
- Adds to Palm OS national language on-screen keyboard layout (for some languages there is several layouts)



- Allows to use external portable keyboard (Palm Portable Keyboard, Targus Portable Keyboard, etc.) to type in national language and for some languages provides several portable keyboard layouts
- Has the convenient interface for management of PiLoc operation
- Supports various localization languages. (If you install additional language resources you will be able to use PiLoc localization in several different languages at the same time.)



- Automatically starts National Language Support after systems reset
- Has protection from cycling reset

- Supports installation into a Flash-ROM
- Automatically starts National Language Support after hard reset (if you have PiLoc installed into a Flash-ROM).
- Provides developers with open API for management of National Language Support modes. It is necessary for developing software that uses National Language Support features. For example, it is used in dictionary program «SlovoEd» (version 2.x), to support different encoding types and to enable switching Graffiti layouts from the program.¹

Modifications of PiLoc

PiLoc program package may contain two modifications of the program: *Lite* and *Full*. You can choose between them at your own.

Lite modification provides correct operations with national language. It includes all features of PiLoc except translation of Palm OS interface to national language. In this case icons, menus and dialogs remain in Default language (English, French, German, depending of your Palm OS version).

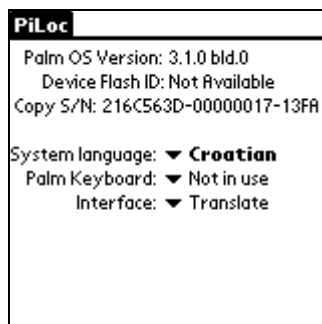
This modification is recommended for non-native national language speakers and for users, who trying to save memory space of Palm OS organizers.

Full modification provides all abilities of *Lite* modification and, in addition, includes resources for translation of Palm OS interface to national language. In this case icons on the desktop, menus, dialogs will be translated to national language.

Modification:	<i>Lite</i>	<i>Full</i>
Interface translation:	No	Yes
General features:	Yes	Yes
Memory space required:	~50-80 Kb*	~150-200 Kb**

Attention! *Full* version of Piloc exists for several languages and several mobile device types. Not for all! If you can't find in the package *Full* version (Full.prc file) in the package, please, ask our support service about availability of *Full* version for your language and your mobile device: msupport@penreader.com.

Each commercial copy of PiLoc is bound with unique copy serial number. To find out your copy serial number open PiLoc dialog (click on **PiLoc** icon in applications screen).



“Copy S/N...” is a serial number of your copy (in the given example serial number is 216C563D-00000017-13FA). This number is required to receive new versions of National Language Support System PiLoc using automatic update service (see **Technical support and update service**).

Limitations of Demo-version:

Demo-version of PiLoc acts like commercial version during 15 days. After five days system language will be automatically switched to default (English) language. If you try to change PiLoc settings, you will see a message about how to buy commercial version of the program.

Installation/uninstallation

Attention! Paragon Software (MCD) doesn't guarantee compatibility of PiLoc and other software, which may get into Palm memory by incorrect way, trap system calls and change operating system behaviour. If you experience problem in installation PiLoc, we recommend to repeat installation after full (hard) reset of your Palm OS organizer. Don't forget to back up all data to your desktop PC before performing hard reset!

¹ “SlovoEd” is one of the most popular dictionary engines for Palm OS on several national markets. You can find more details about dictionary program «SlovoEd» at our website <http://www.penreader.com/slovoed.htm>.

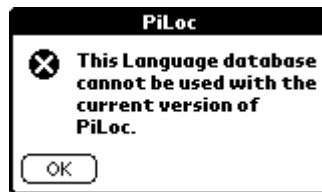
* Depending on language version

** Depending on language version and your mobile device type

Installation

1. If you have old version of PiLoc installed you should remove it first. You can read about uninstallation procedure in appropriate documentation to installed version.
2. Run Install Tool from Palm Desktop folder on your desktop PC. To do it clicks twice the left button of the mouse on an instapp.exe file from Palm Desktop folder.
3.
 - a) If you want to install *Lite* modification, choose PiLoc.prc and {national language}.prc files of PiLoc program and install them.
 - b) If you want to intall *Full* modification, choose PiLoc.prc, {national language}.prc and Full.prc files of PiLoc program and install them.
4. Synchronize (perform HotSync operation) your Palm device and a desktop PC. When synchronization is completed PiLoc will be installed on your device.
5. In order to run PiLoc go Applications->PiLoc, then switch system language to national language one.

Attention! When trying to switch system language to your native one you can see the picture:



It means that you have given wrong Flash ID of your device when registering your copy. Probably you have mixed up digit “1” (one) with letter “l” or digit “0” (zero) with letter “O”. In this case you should register your copy again with right Flash ID.

Attention! After PiLoc installation old sorting of notes is kept in some databases. You should fulfil resorting notes twice (in Address application go Menu->Options->Preferences).

Uninstallation

Attention! Before PiLoc uninstallation make sure that all categories are translated into default language. If you delete PiLoc without translating categories they will be unreadable. How to translate categories read **Categories translation** section.

1. Reset your device. Wait the end of loading.
2. Right after step 1 reset your device again. Wait the end of loading.
3. Don't start PiLoc. Remove PiLoc using standard procedure (Application->Menu->Delete).

National language localization of Palm Desktop

There are PiLoc program and patch **dskpatch.exe** in the program package. The patch provides correct operations with national characters in Palm Desktop applications. If you use the patch you can work with national language documents normally in Palm Desktop. National symbols become readable.

To install patch

1. Copy dskpatch.exe file in folder of Palm Desktop on your desktop PC (a folder on PC that contains software for Palm OS organizer).
2. Close all applications of Palm Desktop and HotSync Manager if they are running at the moment.
3. Run dskpatch.exe. When the operation is completed your Palm Desktop can work correctly with national symbols.

Using PiLoc

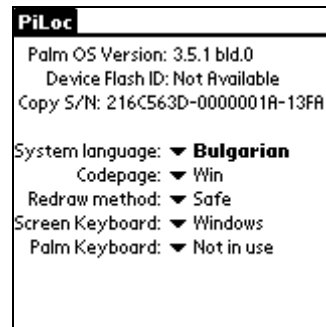
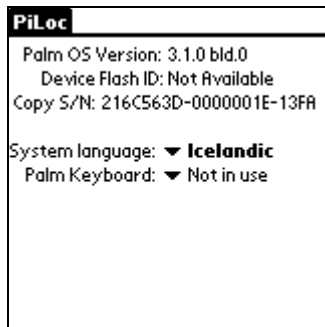


To activate National Language Support start PiLoc by clicking on its icon in applications list. Then set the national language as system one. National language is activated and different options appear on the screen. Now National Language Support will be active even after soft reset.

Attention! For safety of your information PiLoc has a protection from cycle reset. If soft reset occurs more than once a minute National Language Support is not started automatically. This is made to avoid data loss if there is a conflict between faulty written resident programs and National Language Support System PiLoc.²

² Active beta testing has not found such programs yet.

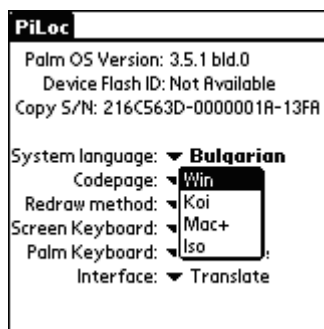
If national language support is activated you can change PiLoc options:



Codepage (for some languages)

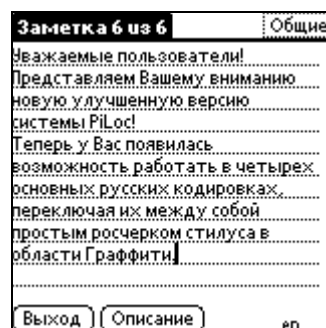
For some languages National Language Support System PiLoc supports several basic national encoding types. You can choose any of them as basic one. Then you will be able to view national texts normally in this encoding type, enter the symbols with Graffiti, on-screen keyboard and even with external keyboard. However you should take into account that for correct synchronization of your data with applications on your desktop PC (for example, Palm Desktop), your data should be in **Windows** encoding type. Only in that case you can work normally with national text both on desktop, and on your Palm device. You have 2 ways to change basic encoding type: changing codepage in PiLoc options dialog and in currently active application without exiting (using Graffiti shortcut).

In the first case you should open PiLoc Options dialog and choose encoding type:




If your desktop computer is a Macintosh, you should set **Mac+** encoding type as a system one. This encoding type provides correct synchronization of data between your device and Macintosh. You don't need to install any additional patch.

If you want to change active encoding type without opening PiLoc Options dialog (it may be useful, for example, in Email clients) you should use special Graffiti symbol ↵, and then in appeared dialog choose the required encoding type.



Attention! It was used another symbol for on-line switching encoding type: ↵ in earlier versions of PiLoc. But this symbol is initially used in system for a sign “£” («pound sterling»). Therefore this Graffiti symbol was returned to it in PiLoc 2.0.

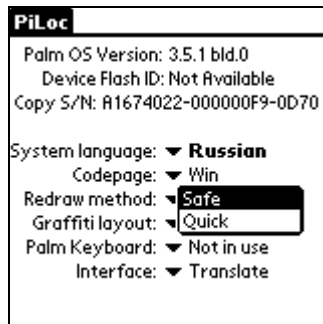
Text encoding function (for some languages)

If you switch between different encoding types by special Graffiti symbol , all clipboard content is converted into new encoding type. If you switch between different encoding types by codepage option in PiLoc options dialog, clipboard content isn't changed.

Text encoding function may be useful, for example, in the case you need to insert in your text a fragment from E-mail with another encoding type (you can't correctly see symbols in different encoding types simultaneously).

Redraw method (for some languages)

Every time you switch between different encoding types current application screen should be redrawn. PiLoc provides two methods of redrawing – **Safe** and **Quick**.



The first is more reliable as it simply restarts a current application. But some inconvenience takes place: opened dialogues are closed and you return to a basic window of the application. The second method doesn't have this inconvenience; it redraws all visible forms under their z-order. But in some applications, which use non-standard window elements, drawing these elements can make them invisible. In addition, if you are using translated interface, elements of interface will not be encoded and will be non-readable until next start of the application.

You can choose any method of redrawing at your own.

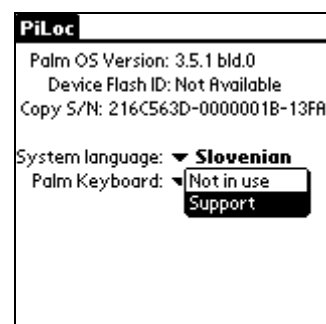
On-screen keyboard layout

PiLoc adds national language on-screen keyboard layout to Palm OS (or several layouts). If more than one national on-screen keyboard layout is available, you can use a layout that is the most convenient and comfortable for you.



Using external keyboard

PiLoc allows to input national language letters using external keyboard (Palm, Targus, etc). If you use the keyboard and you want to type in national language you should set this option to desired layout (or to **Support**, if only one keyboard layout is available):



After that you can use the external keyboard to type both in English, and in national languages. If you set this option to **Not in use** you can type only in English.

Attention! For using external keyboard you have to install special external keyboard driver. Without this driver you can't type any characters using external keyboard (neither Default, nor national language symbols).

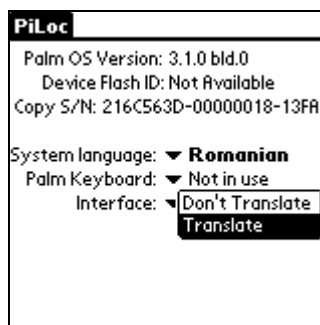
Sorting order support

PiLoc supports the right sorting order for each national language according to its alphabet. But some languages (Czech, Slovak, Hungarian and so on) have special letters and combinations of letters, which are considered as one letter. For example Slovak language has the letters **ä, ä, ç, č, h, ch, l, l'** and others. PiLoc supports the right sorting order for such difficult alphabets too.



Switching modes of interface operation

If you install Full modification of PiLoc you can switch between national language and original (Default) interfaces of Palm OS. If you want to see Palm OS interface in national language, you need to choose **Translate** interface option:



After that the interface will be in national language.

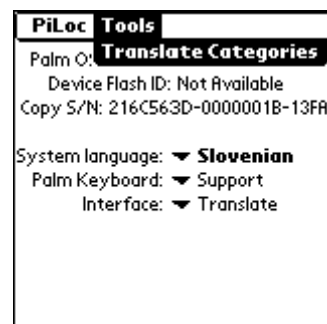
If you want to see something in original (Default language) interface, you should choose **Don't Translate** interface option.

Categories translation

If you install Full modification of PiLoc you can translate standart categories of all built-in Palm OS applications into national language or Default language.

Categories can be translated only by direct call of categories translation function. Categories state is independed of PiLoc operation mode – you can even delete PiLoc from your device, but categories names remain the same (but national symbols may be unreadable, because of national symbols are not supported by default Palm OS). If categories are translated you can work with them by the same way you do in Default Palm OS language.

All standart (default) categories will not be translated into national language after first installation of PiLoc *Full* onto your device. But you can translate categories in the national language right after PiLoc installation. If you want to use translated categories you should set national language as system one and switch on interface translation. Then you should open PiLoc menu and choose **Tools/Translate Categories**:

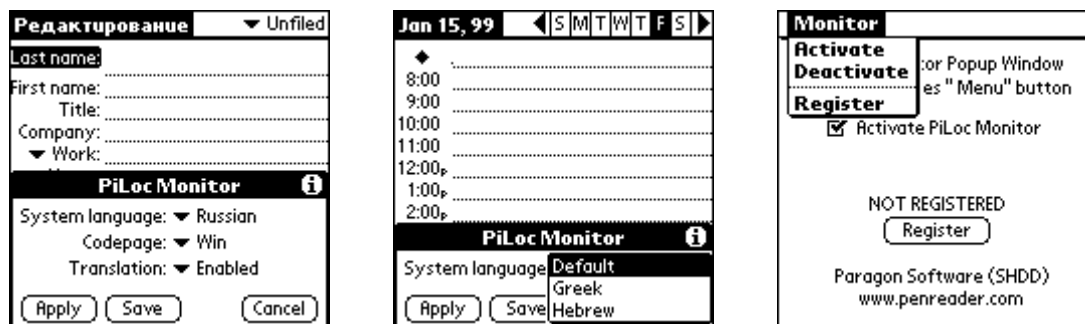


You can return to the original (default) names of categories. To do that, you should choose Default language as system one or choose **Don't Translate** as Interface option. Then activate PiLoc menu and choose **Tools/Translate Categories**. If you edit standart categories before its translation, all changes you made will be lost. If you added some new categories, these categories will not be translated and their content remains the same.

Languages management system

PiLoc package includes demo-version of PiLoc Monitor utility.

Palm OS by default does not allow working with several languages. PiLoc Monitor combined with PiLoc break this limitation. You can switch between languages (Russian, Hebrew, Latvian, Estonian and so on) using PiLoc Monitor as easy as you do it in Windows, only by few stylus clicks. PiLoc Monitor enables unique language preferences for each application, such as current system language, current codepage, interface translation feature.



You can find more detailed information about PiLoc Monitor usability, demo-version limitations, procedure of buying the commercial version of the program in PiLoc Monitor documentation file.

Using Graffiti

If national language is set as system language, you can enter both English letters and letters from national ABC with Graffiti. PiLoc adds to standard Graffiti layout several symbols to enable to write national characters.

To know modified Graffiti layout, open Graffiti help drawing vertical line from Graffiti area up to the center of the screen. Graffiti help includes help on English and on additional national language Graffiti symbols.

API of national language PiLoc for developers

Paragon Software (MCD) provides developers of the software for Palm OS with a toolkit for developing applications that use functions of National Language Support System PiLoc (API). For example, API is used in dictionary program "SlovoEd" (see chapter **About PiLoc**).

You can receive API of PiLoc 2.0 **free-of-charge** if you direct inquiry to Paragon Software (MCD): palmdeveloper@penreader.com. You can also consult with Paragon Software about using the API of PiLoc.

Technical support and update service

If you have any questions concerning **PiLoc** and **SlovoEd** programs contact technical support service of Paragon Software (MCD):

msupport@penreader.com

Tel: +7 (095) 408-61-79, 408-76-77

(Telephone line of technical support works till 11.30 to 19.00)*

Web: <http://www.penreader.com>

Paragon Software (MCD) has organized web-conference for PDA users. Here you can ask any question about PDA (software and hardware), Paragon Software programs and discuss any problems concerning mobile devices with other PDA users. You can write there in English and in national language.

Welcome to our web-conference: <http://mboard.penreader.com>

Being the legal user of our programs, you can receive latest versions of **PiLoc** and **SlovoEd** at any time you wish. You can find all information about update service at:

<http://www.penreader.com/piloc.htm>



If you have a credit card you can buy **PiLoc** and **SlovoEd** as well as our programs for other mobile platforms (Windows CE/Pocket PC, EPOC/Psion) in Digital River secure network:

<http://buy.penreader.com/>

http://www.digitalriver.com/dr/v2/ec_Main.Entry?SP=10007&SID=18212&CID=0

Dear customers!

We would be glad to get your offers and comments that would help us to increase our programs quality.

Thanks a lot in advance for your comments and ideas!

* **When calling from outside Russia, please consider time shifts:** Moscow is 11 hours ahead of San-Jose, 8 hours ahead of New York, 3 hours ahead of London, 2 hours ahead of Munich and Paris, 6 hours behind Tokyo. Moscow office operation hours are from 11.30 till 19.00 by Moscow local time.



© Paragon Software (Mobile Computing Division), Dolgoprudny, Moscow region, Russia

13.09.2001